

Stopping litter from land to sea

Total participants:

Weight of litter:

Number of bags filled:

Weirdest item found?

Where did you clean? (please circle)

Town | Countryside | Park | Street | River
Playground | Office grounds | Other

School group? Age

Youth group? range:

First half of your postcode:

The litter you record on your local clean-up will help us identify and create a snapshot of the litter that is still plaguing our environment, including single-use items such as PPE.

80% of the litter we find in our ocean comes from inland. Spot the litter, note what you found, then pick it up.

1. Plastic drink bottles



Tally:

2. Loose plastic bottle caps/lids



Tally:

3. Plastic drink cups



Tally:

4. Glass bottles



Tally:

5. Metal drink cans



Tally:

6. Polystyrene fast food containers



Tally:

7. Polystyrene cups



Tally:

8. Paper cups



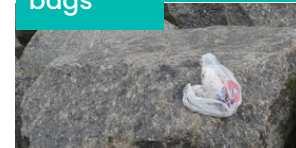
Tally:

9. Disposable BBQs



Tally:

10. Single-use plastic bags



Tally:

11. Plastic bags for life



Tally:

12. Wet wipes



Tally:

13. Single-use face masks



Tally:

14. Single-use plastic gloves



Tally:

15. Balloons



Tally: